

WiFi OBDII

Use Instructions

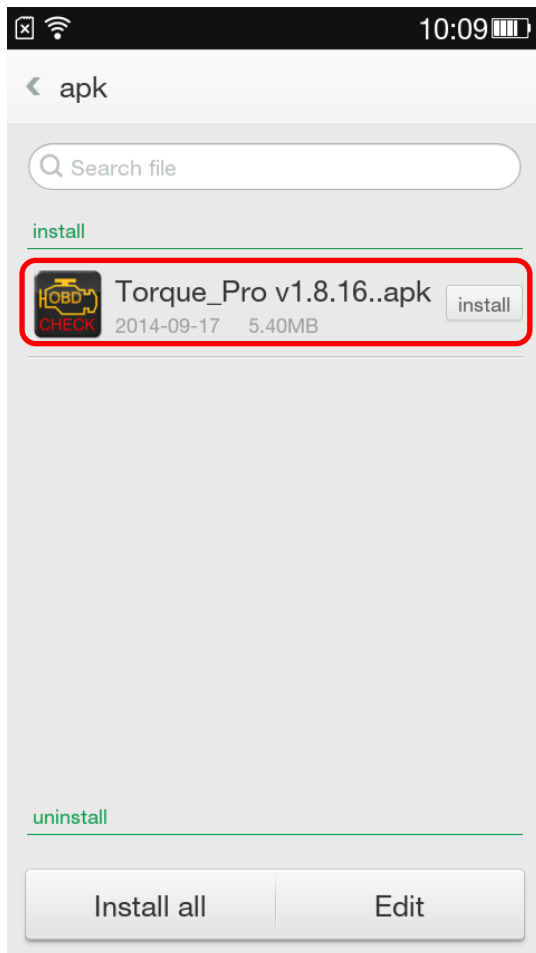
WiFi OBDII for Android

1. Install OBDII

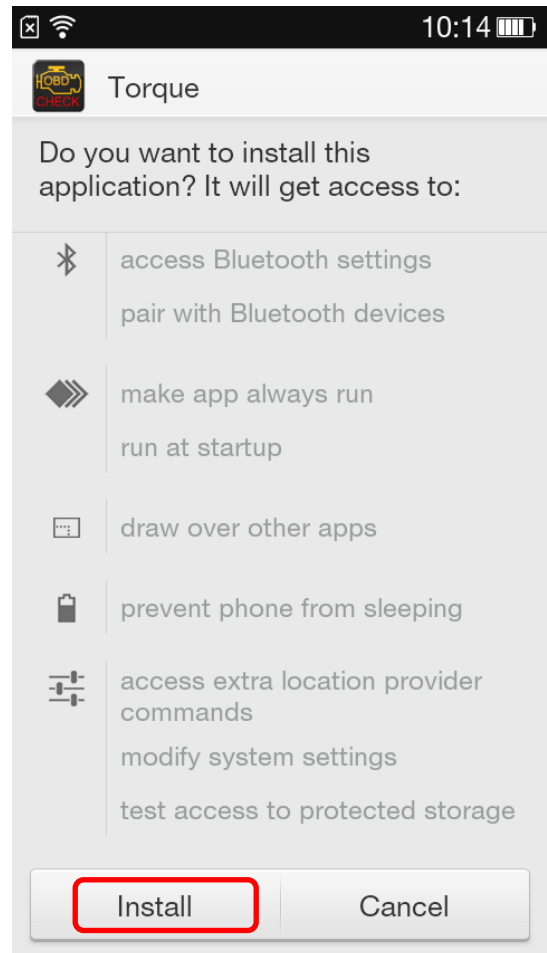


2. Install Android Software **Torque**

a) Copy software to phone

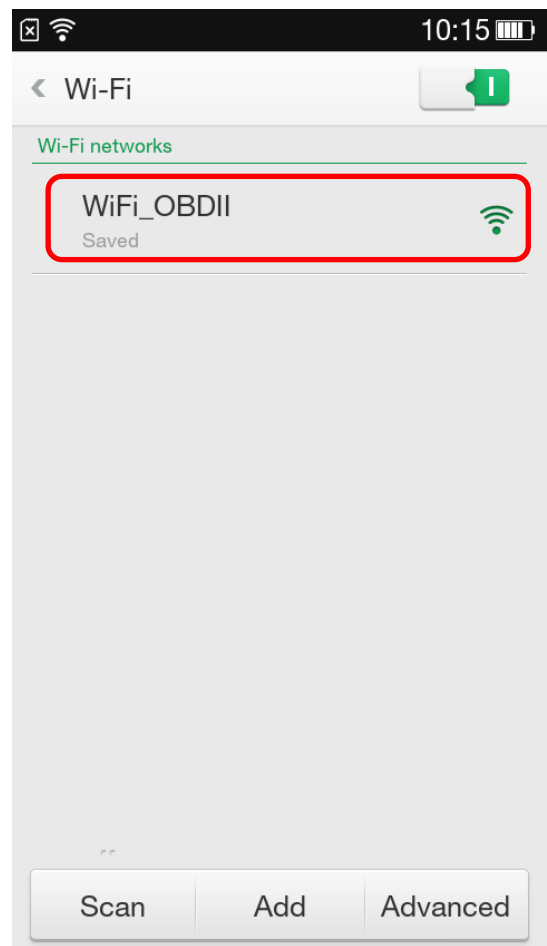


b) Install Software

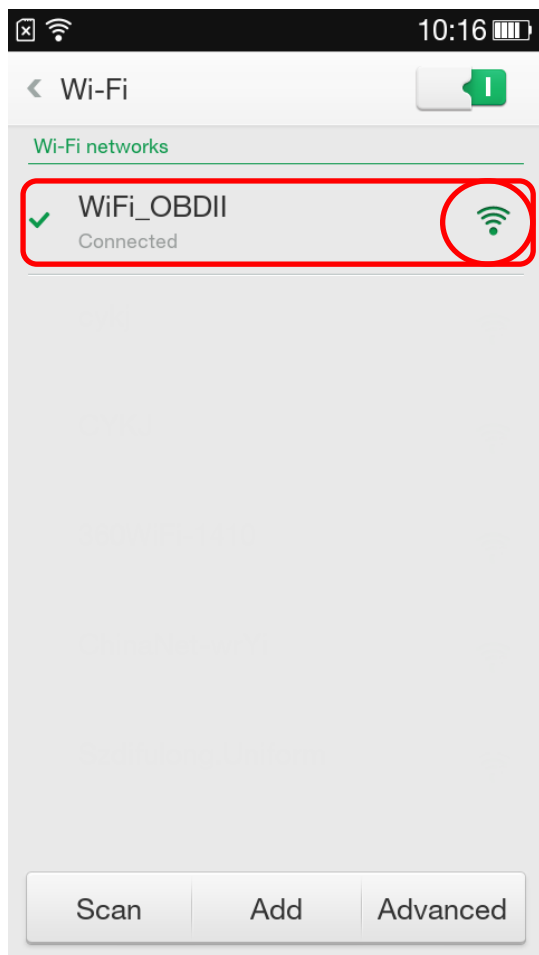


3. Connection OBDII

a) Search OBDII WiFi

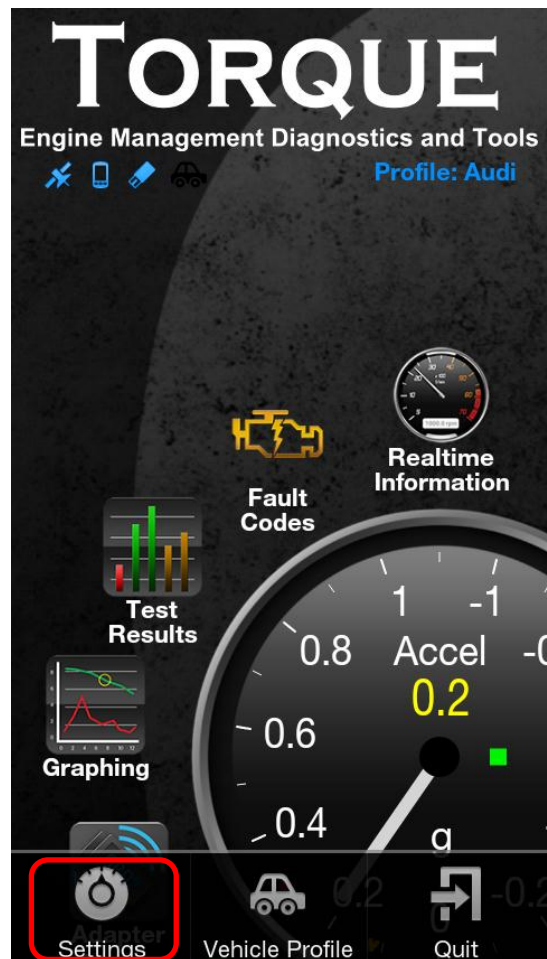


b) Click Connection OBDII WiFi

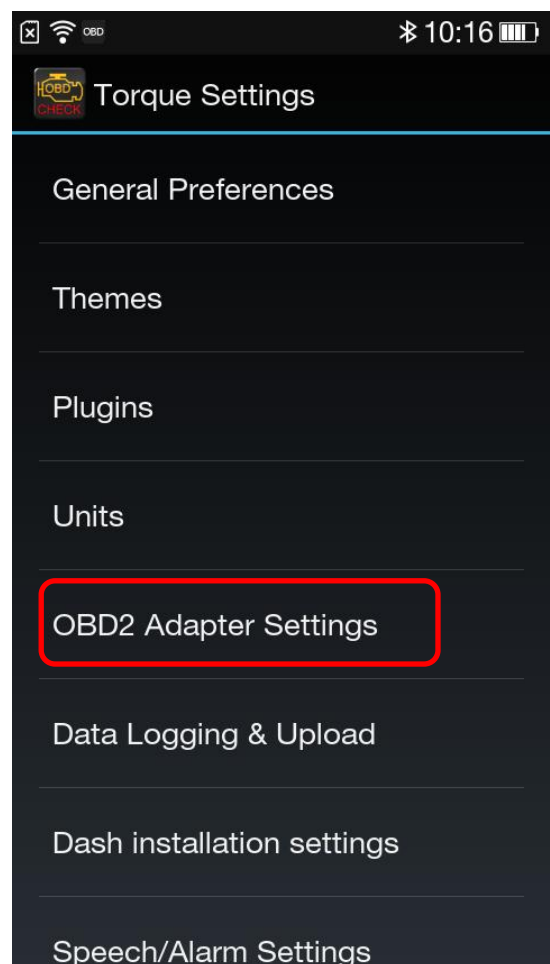


4. Run Software

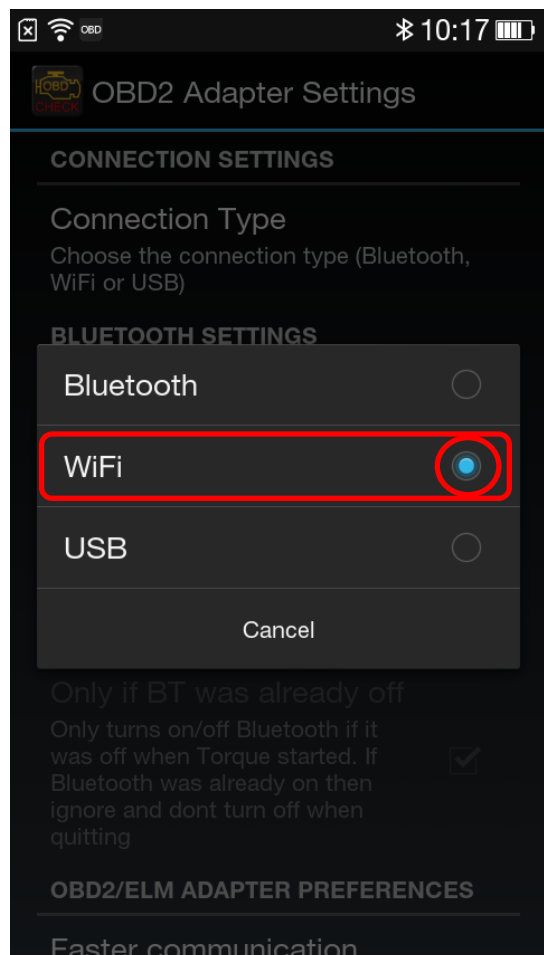
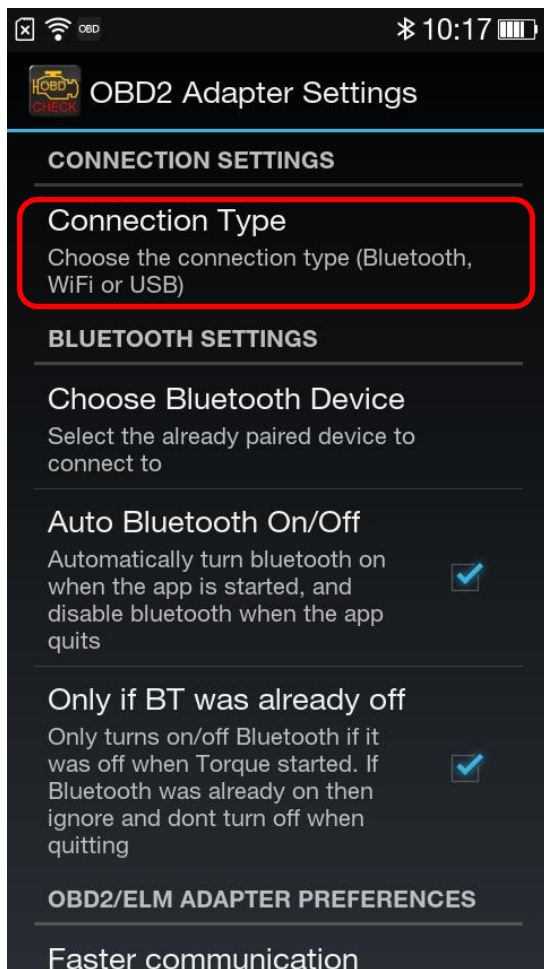
Click **Menu** button setting WiFi connection



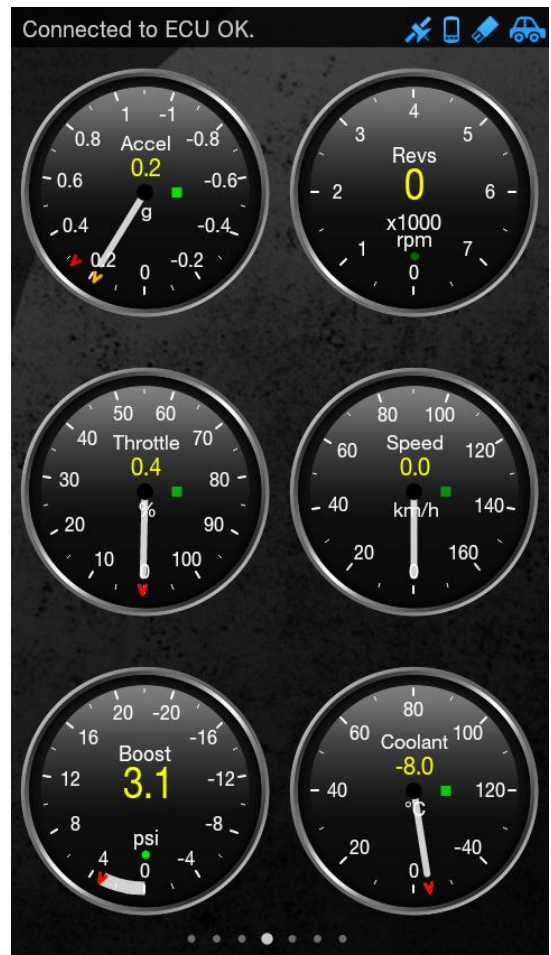
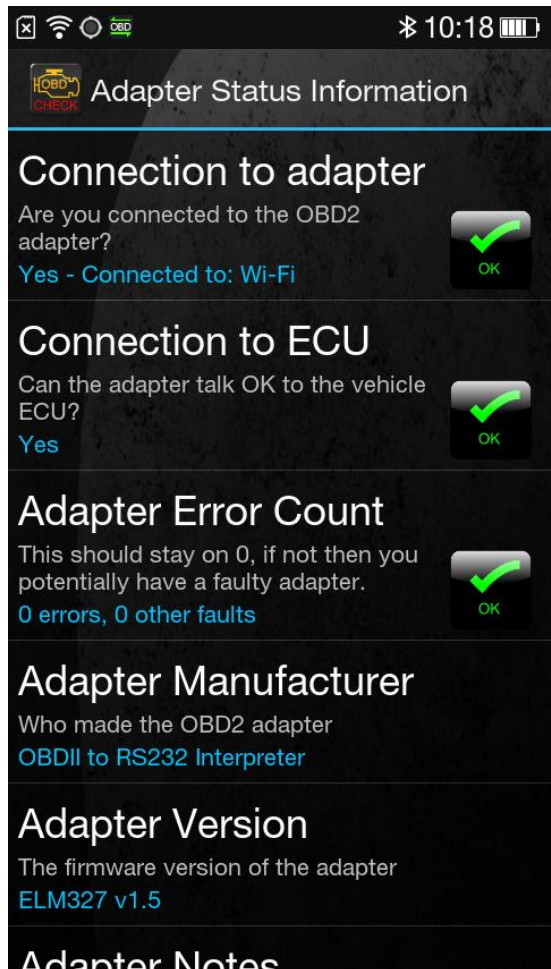
a) Click OBD2 Adapter Settings



b) Choose Connection type is **WiFi**



Successful connection



WiFi OBDII for Apple IOS

1. Install OBDII



2. Install IOS Software **DashCmd-v3.3.1.ipa**

Installation "DashCmd" via iTunes (IOS need **jailbreak**) or App Store Search "DashCommand" and **buying**

3. Wi-Fi Connection OBDII



4. Run Software

Click Connection

